

# Easy Fipple Flute

You will need

- A section of dipper-gourd handle. Longer sections give lower notes.  
You can use the top of the handle, where the stem is, and this saves having to plug one end. I'll show you both types.
- Tools for cleaning. A knitting needle works pretty well. Bottle brushes work even better.
- Cutting and filing tools. A dremel makes it easy but an exacto knife and nail file will do in a pinch.
- A drinking straw or soft plastic tubing.
- Tape or glue.
- A drill or dremel for holes.

Clean the inside of the tube.



If you need a plug, [make one](#) now.

When you play your flute, the closed end goes in your mouth and the other end points down. So I will call the closed end the "top" and the open end the "bottom".

At the top end, find the side with the straightest profile. You need about 2 inches of straight surface for the fipple. Hold tube in front of you and rotate while looking at the "horizon". Mark the straightest one you find.



Bottom curves inward; no good



Too curvy



Top looks good



Check it



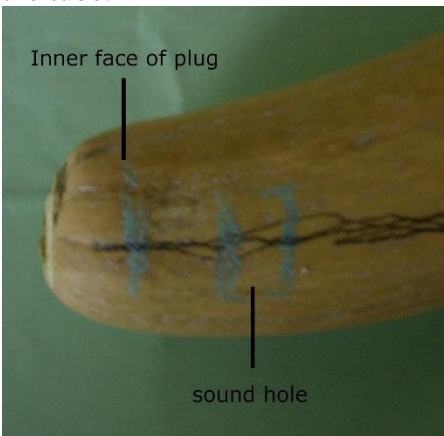
Mark it

If your straightest side isn't straight, file it until it is.

Cut a square hole at least half an inch from the top of the gourd, but further if your plug goes further. You might need to feel inside with a stick to find the distance to the plug, then bring it to the outside to mark the gourd.



The hole should be about 1/4 inch long and as wide as looks good across your tube, perhaps half the diameter of the tube:

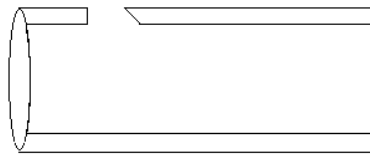


Mark the hole



Cut the hole

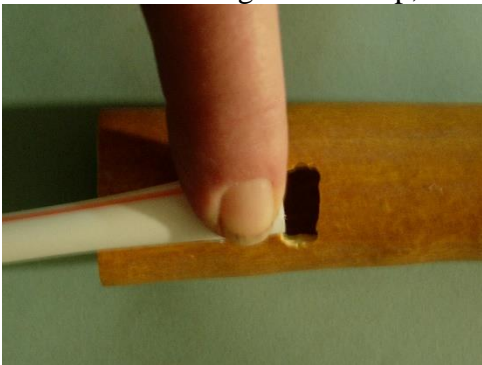
Now file the bottom face of the hole so that it slopes inward. The bottom edge of the hole now forms a wedge shape.



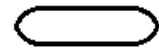
A file works best, but an emery board will do.



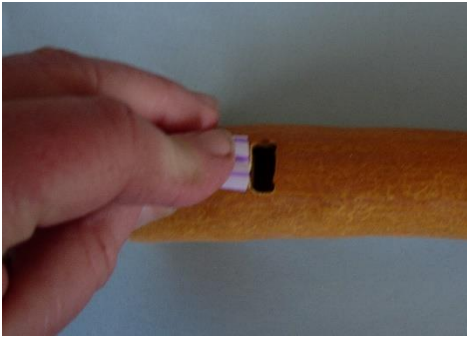
Hold a straw flat against the top, with its end lined up with the top of the sound hole.



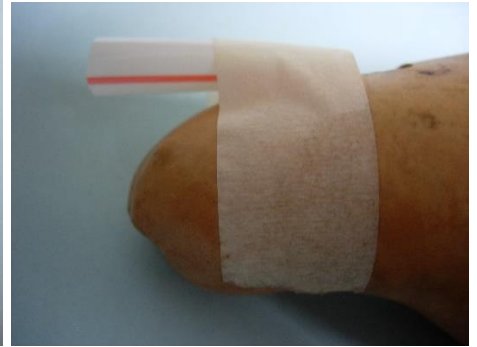
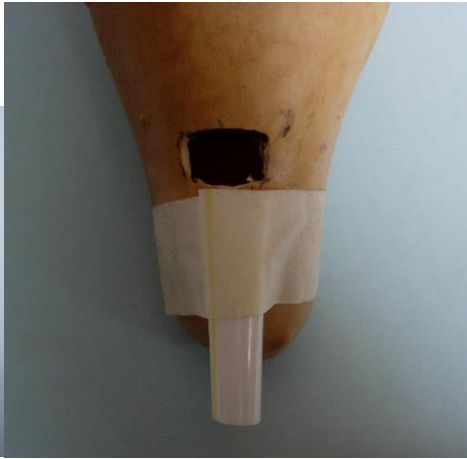
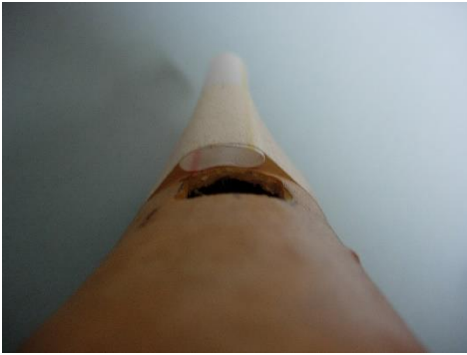
Press down on the end of the straw to make a rectangular hole instead of a round one.



If your sound hole is wider than your straw, that's ok. But it's also ok to use 2 straws:



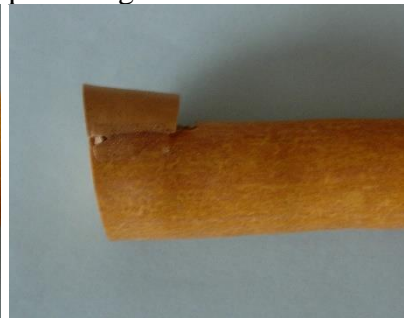
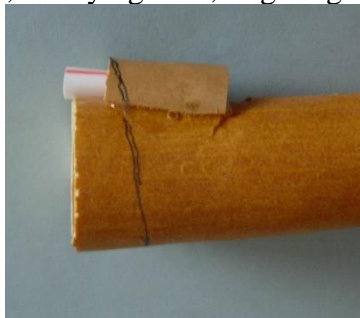
Blow through the straw. Good sound? If not, move the straw while blowing. Try smashing the end flatter, tilting it up away from the gourd, pulling it back from the edge of the hole...anything you can think of. Look in a mirror to make sure that the alignment you created is still in place when you blow. When you find the orientation that works, tape the straw in place. You might have to tape twice to get the straw flatish at the end.



Cut the straw and clean up the tape job.



Or hold the straw some other way, like tying it on, or gluing a piece of gourd to hold it:



Now make finger holes.





Oops, I don't like how big those are.

I could have plugged them with gourd, but since this is an easy project, I covered them with tape.



Then I turned the flute over and put smaller holes on the other side.



[Listen.](#)

Works for ocarinas, too:



[Listen.](#)